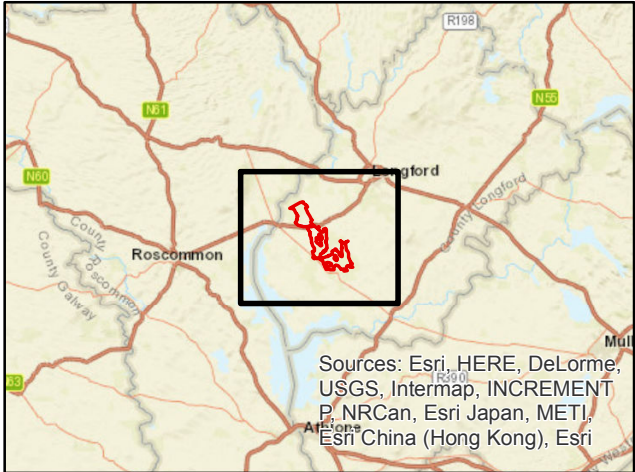


- ### Legend
- Planning Application Boundary
 - Proposed Turbine Locations
 - Proposed Met Mast Locations
 - Existing Met Mast Locations
 - Road Layout
 - Proposed Substation Options
 - Borrow Pit Locations
 - Temporary Construction Compounds
 - Borehole
 - Dry valley
 - Enclosed depression
 - Spring
 - Swallow Hole
 - Turlough
 - Mineral Location
 - Bedrock Outcrop
 - Aghamore Formation, AE
 - Meath Formation, ME
 - Moathill Formation, MH
 - Basal Clastics (Rinn Point Limestone Formation), RP
 - Ballysteen Formation, BA
 - Fearnaght Formation, FT
 - Lucan Formation, LU
 - Argillaceous Limestones, AL
 - Visean Limestones (undifferentiated), VIS
 - Dolomitised limestones (Visean Limestones), VIS
 - Waulsortian Limestones, WA
 - Lackan Formation, LN
 - Dolomitised limestone, VIS
 - Mudbank Limestone, mk
 - Carrickateane Formation, CT
 - Finnalaghta Formation, FA
 - Slieve Glah Formation, SG
 - Area
 - Fault
 - Unconformity, dots on younger side
 - X-Section

Sources: Esri, HERE, DeLorme, USGS, Intermap, INCREMENT P, NRCan, Esri Japan, METI, Esri China (Hong Kong), Esri Korea, Esri (Thailand), MapmyIndia, NGCC, © OpenStreetMap contributors, and the GIS User Community



0 5 10 20 30 40 Kilometers



Derryadd Wind Farm



The constraints shown are draft only and subject to change. More detailed assessments, on-going studies and information received may result in changes to these constraints.

Coordinate System: IRENET 95 Irish Transverse Mercator
Source: Geological Survey of Ireland

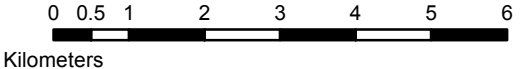


Figure No. 7.4

Regional Bedrock Rev.01	
Drawn By:	Ewa Młodawska
Checked by:	Laura Burke
Date:	23/01/2019